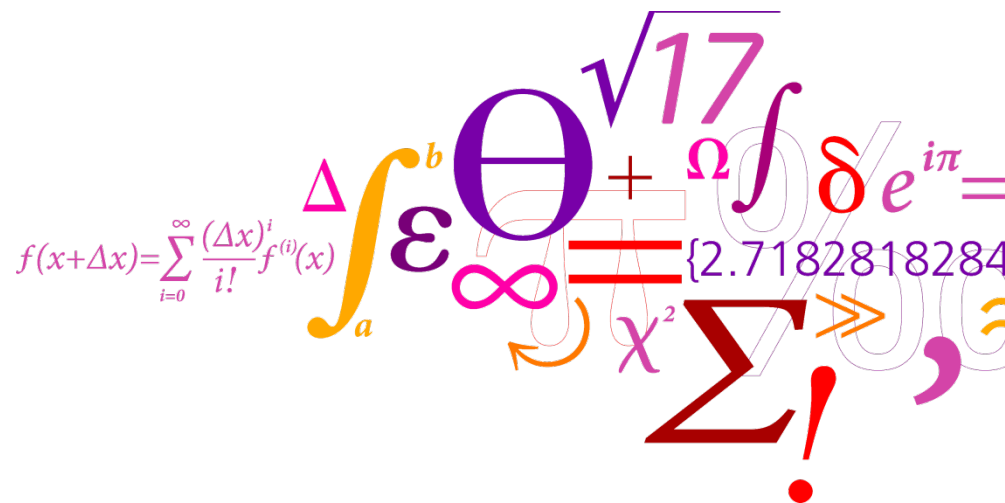
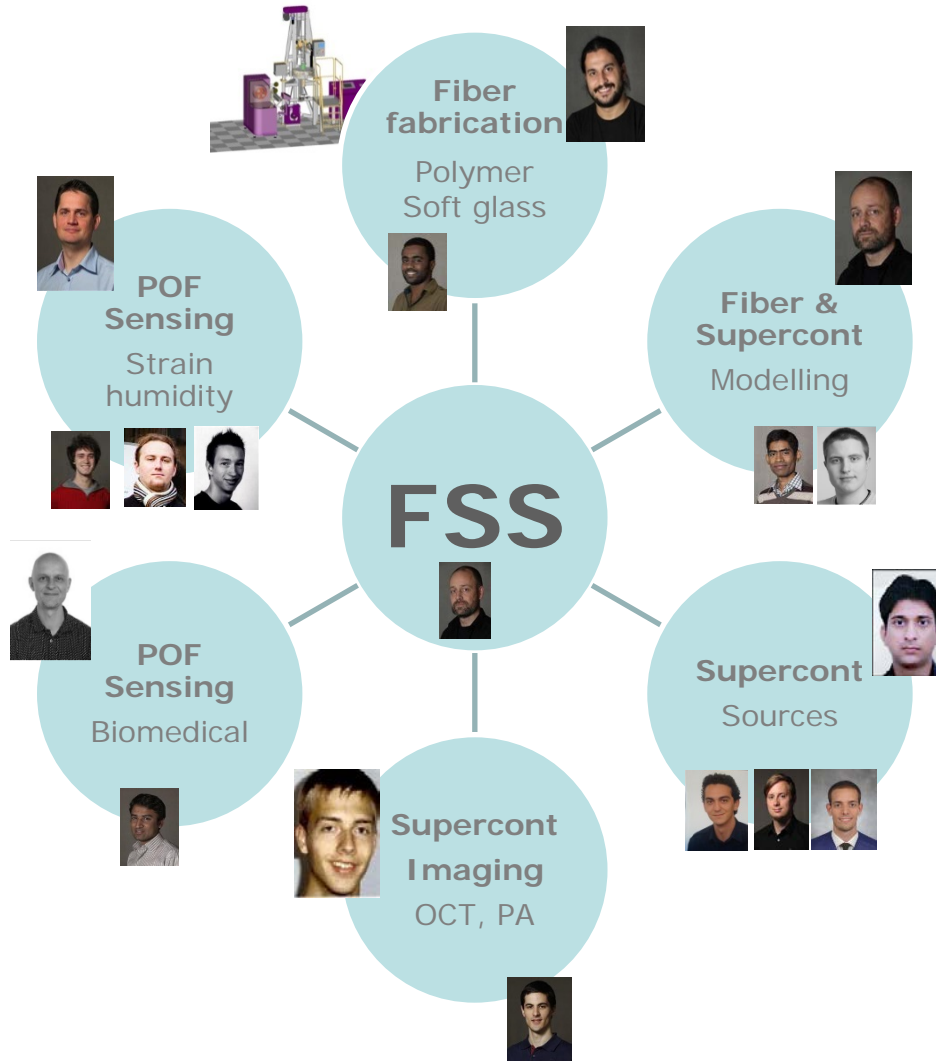


Fiber Sensors & Supercontinuum Group

Ole Bang, professor



General Group Overview - *people*



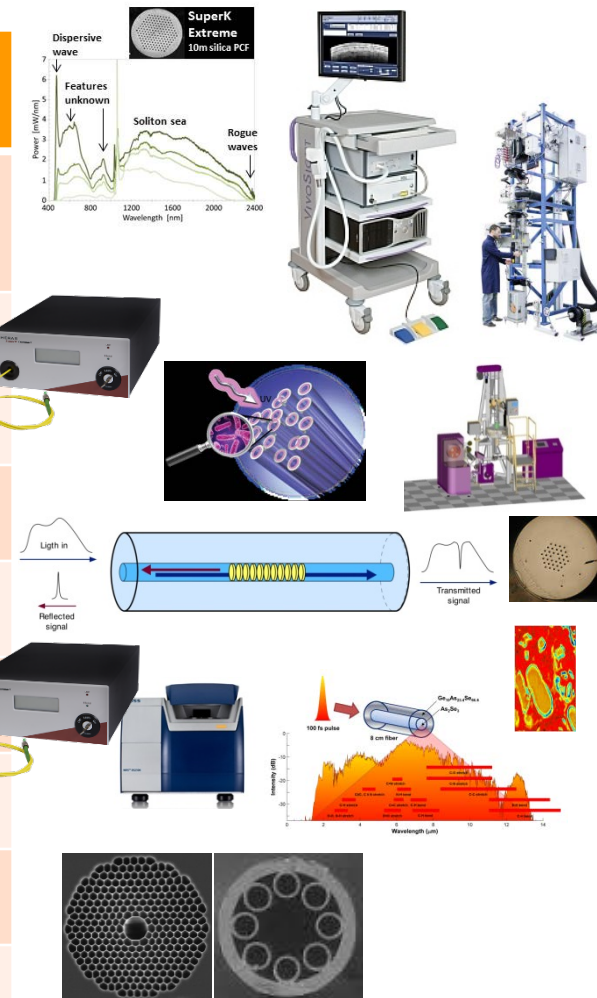
19 people:
1 Professor
1 Develop Eng.
4 postdoc
11 PhD
3 MSc+BSc

MSc & BSc



General Group Overview - *Projects*

Running projects	Total €	Fotonik €	Period	Area
LOISE <i>Low noise SC sources for ultra-high resolution 800nm OCT for glaucoma diagnosis</i>	0.9M	0.9M	2015-19	800nm SC modelling & systems
ShapeOCT <i>Spectrally shaped SC sources for high-resolution OCT medical imaging and non-destructive testing</i>	3.4M	2.6M	2015-19	1300nm & MIR SC modelling & systems, OCT systems, MIR fibres
BIOFORS	1.6M	0.3M	2014-17	Polymer fibers for catheters
TRIPOD	3.1M	0.9M	2013-17	Polymer Fibers & FBG sensors
Light&Food	4.0M	0.4M	2013-17	MIR SC modelling & systems
MINERVA	11.0M	0.7M	2012-16	MIR SC modelling & systems
QTEA	4.2M	0.5M	2012-16	Hollow-core fibers & applications
Total	28.2M	6.3M		



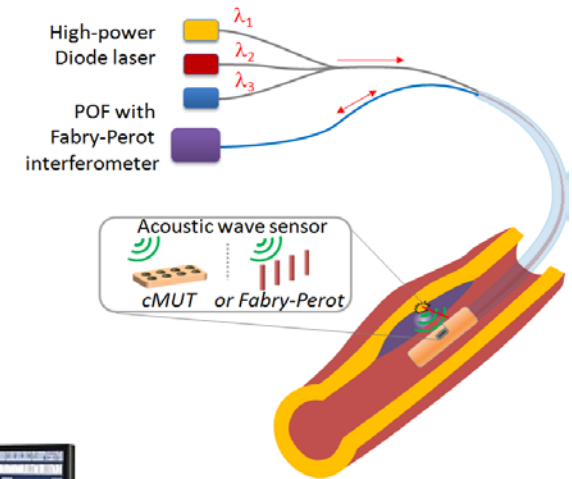
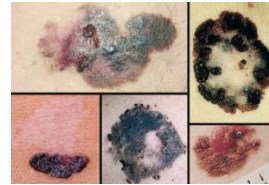
UBAPHODESA activities

- **PhD course "Supercontinuum generation in photonic crystal fibers"**
 - December 2014 (ESR1 Michael, ESR3 Sophie, ESR4 Felix, ESR5 Magalie)
 - Lectures and subsequent test
- **Univ. Kent PhD Course PH800 "Biomedical Optics"**
 - Gave Lectures
 - Provided examn questions on Supercontinuum sources
 - Marked the answers (ESR5)
- **PhD supervision**
 - Mainly ESR1 + 3 + 5
 - Common paper with ESR5 published
 - Paper scheduled with ESR3
 - 3 papers scheduled with ESR1 - *collaboration UBAPHODESA – ShapeOCT - LOISE*
 - Discussions with ESR4
- **A. Podoleanu partner and WP manager in ShapeOCT**
 - Weekly meetings over Skype
 - Strong collaboration

Future Plans

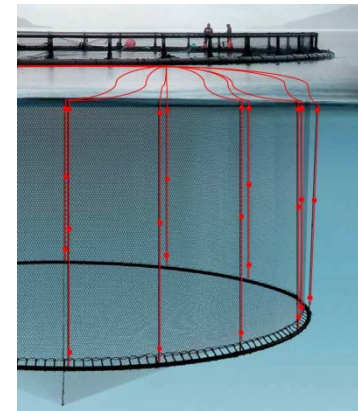
- **Applications of supercontinuum in imaging**

- Optical Coherence Tomography
 - Cancer, NDT
- Photoacoustic Imaging
 - Cardiovascular Diseases



- **Polymer fiber sensor applications**

- Biosensing – *Novo Nordic, Akvagroup*
 - Glucose, Oxygen
- Strain-Humidity-temp. – *NCC, Rambøl, Akvagroup, Terma, DTU Byg*
 - Concrete, Composites, Fish Farms



- **Salary for 6 senior people continuously heading the 6 activities**

